

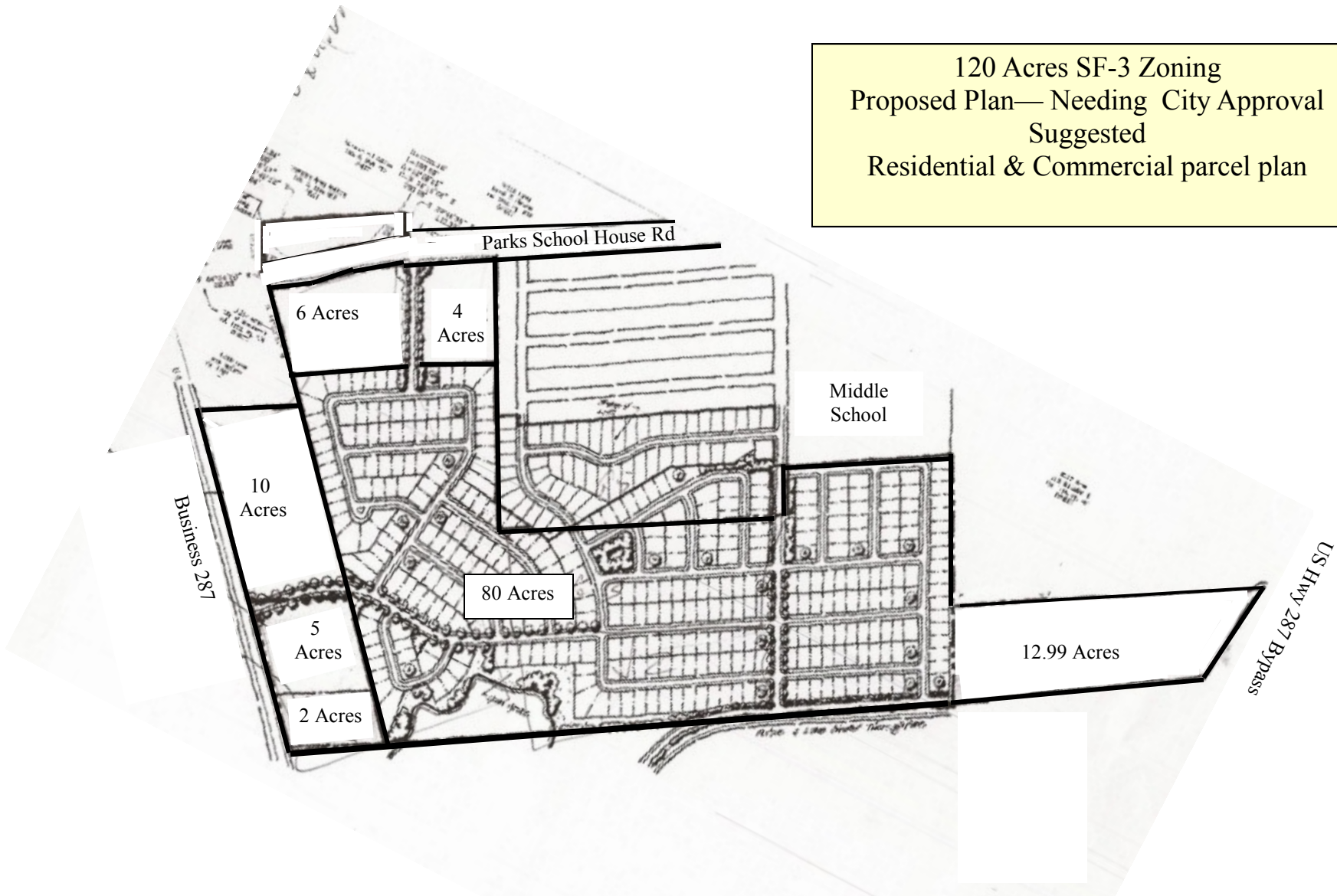
the **ZEPP COMPANY**  
*Results with Quality Service*

**Waxahachie Land 120 +/- Acs**  
**Asking Price: \$10,000 per acre**  
**US Hwy 287 Bypass @ Parks School Road**  
**Zoning SF 3**



**FOR INFORMATION**  
**Katina Zepp**  
**214.676.3709 Cell \*\*\* 214.242.2053 E Fax**

120 Acres SF-3 Zoning  
Proposed Plan— Needing City Approval  
Suggested  
Residential & Commercial parcel plan

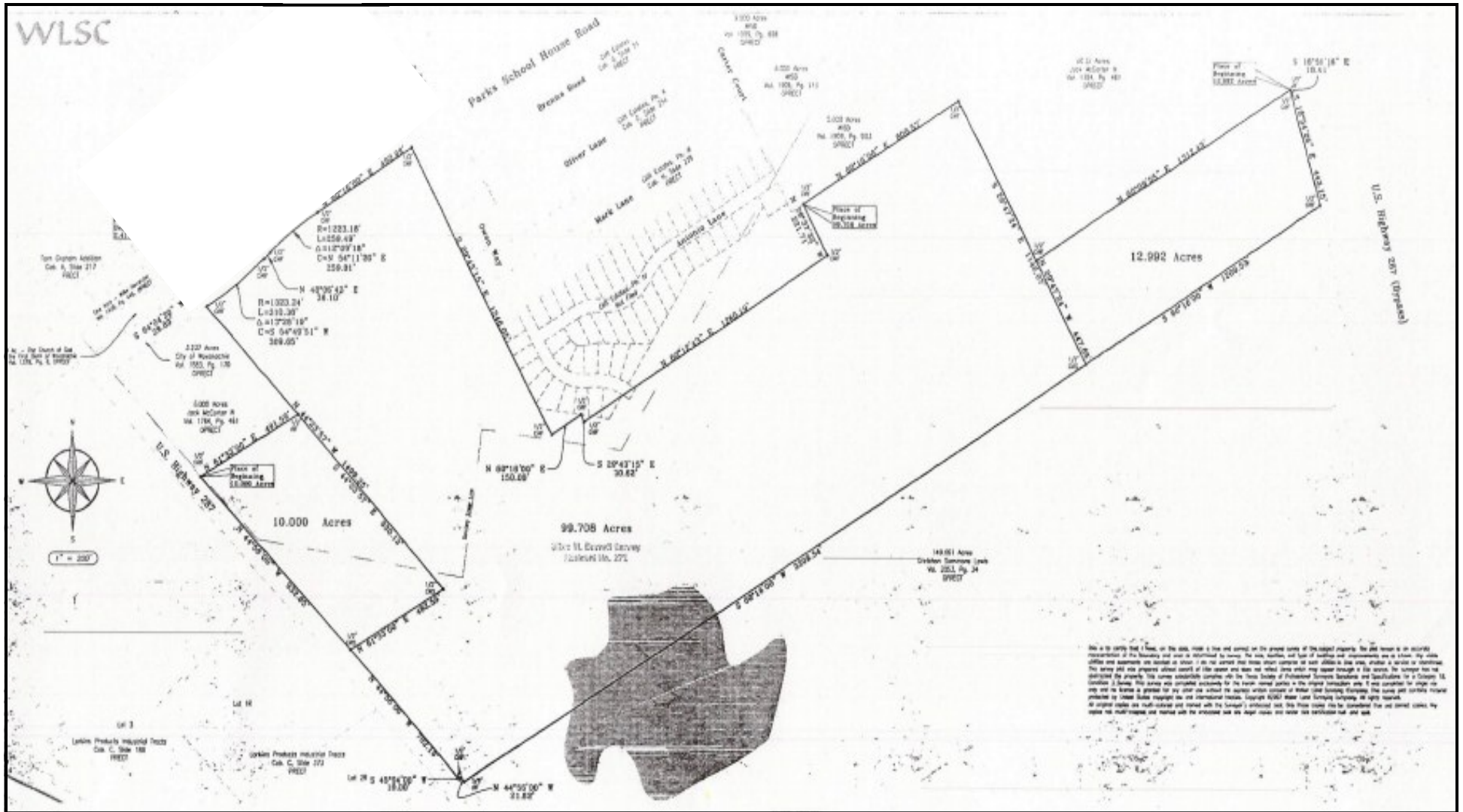


[www.zeppcompany.com](http://www.zeppcompany.com)

Information furnished, while obtained by sources believed reliable, has not been verified by Craig International Inc.; we make no guarantee, warranty or representation as to its accuracy and completeness. It is submitted subject to independent investigation by you, without reliance on us. This submission is subject to change in price, prior to sale or withdrawal without notice.

# THE ZEPP COMPANY 214-676-3709

www.zeppcompany.com



Information furnished, while obtained by sources believed reliable, has not been verified by Craig International Inc.; we make no guarantee, warranty or representation as to its accuracy and completeness. It is submitted subject to independent investigation by you, without reliance on us. This submission is subject to change in price, prior to sale or withdrawal without notice.

