



**ZEPP
COMPANY**

FOR SALE

*Virginia Woods Land Parcels — McKinney, Tx
South side of Virginia Pkwy
Just west of Central Exprwy and east of Carlisle*

Size Tracts:

LOT 2 1.256 acs.
LOT 3 1.262 acs.
LOT 4 1.353 acs.

Zoning

PD—"O" Office District

Asking Price

\$9.00-\$12.00/psf

Building Height

South Pads 30 ft
North Pads 40 ft

Uses

Professional & Administrative

Doctors, dentists, attorneys, architects, engineers, insurance, real estate, travel agents

Business or commercial school, institutions of education, government, and religious buildings;

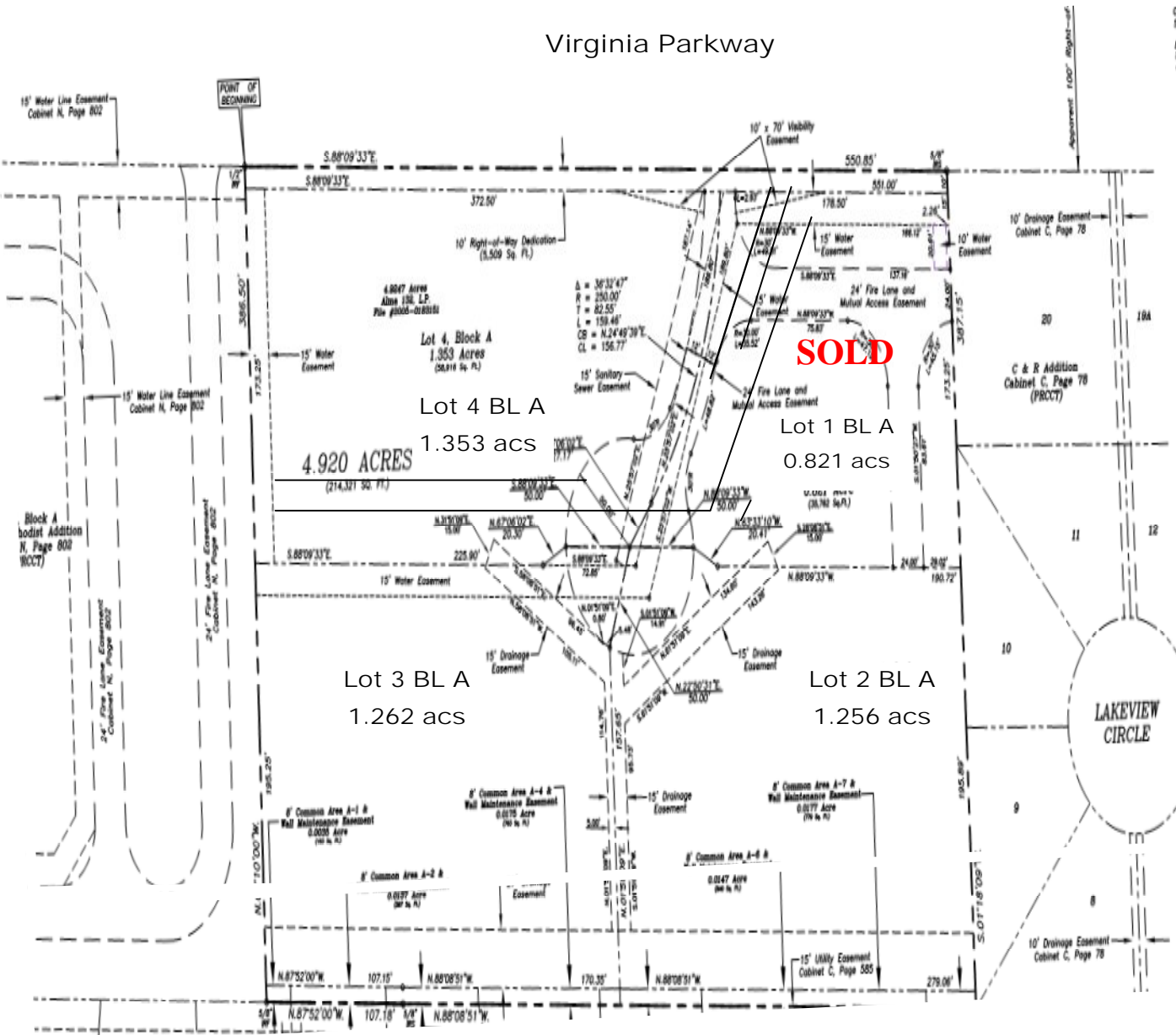


These pad sites are located just west of the Wysong Medical Campus and Central Exprwy. (75) on the south side of Virginia Pkwy. They are located a bit to the north and east of the new Methodist Hospital, to the south of the new Baylor Hospital and minutes away from the HCA Hospital. Not to mention just minutes away from the new Collin County Courthouse located at Bloomdale Rd. and Central Exprwy (75). Great site for office condos.

Information furnished, while obtained by sources believed reliable, has not been verified by Craig International Inc.; we make no guarantee, warranty or representation as to its accuracy and completeness. It is submitted subject to independent investigation by you, without reliance on us. This submission is subject to change in price, prior to sale or withdrawal without notice.



Virginia Parkway



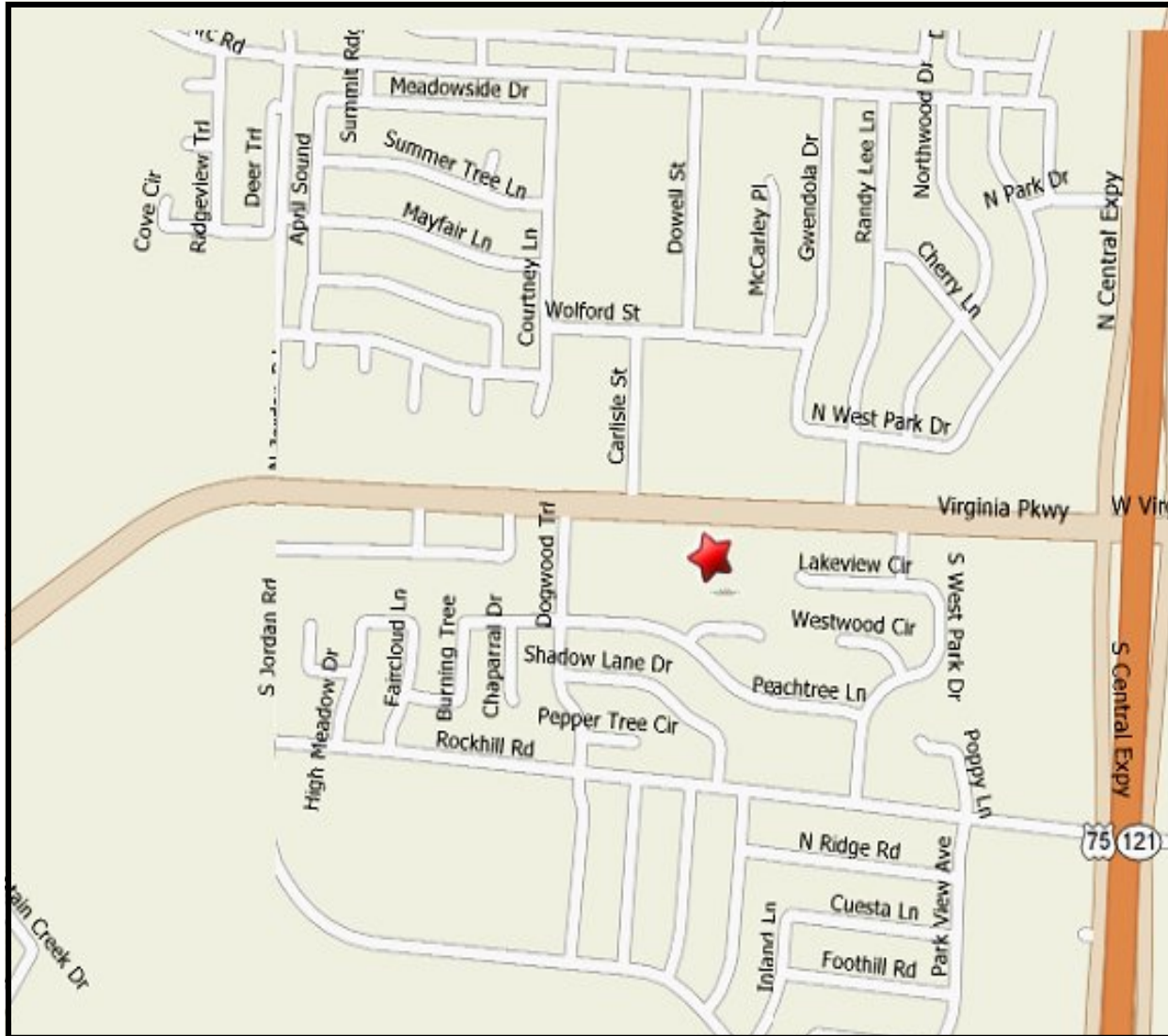
- AMENITIES**
- * Great access to Central Exrwy (75)
 - * Close to Healthcare Facilities
 - * Short distance to restaurants, shopping and more
 - * Easy access to Historic Downtown McKinney
 - * Close to the new Collin County Courthouse
 - * Pads are in and around residential neighborhoods.

FOR INFORMATION

Katina Zepp
 Direct 214-644-1226
 Cell 214-676-3709
 katina@katinazepp.com

6850 TPC Dr., Suite 210
 McKinney, Texas 75070
 Office 972.529.1371
 E-Fax 214.242.2053

Information furnished, while obtained by sources believed reliable, has not been verified by Craig International Inc.; we make no guarantee, warranty or representation as to its accuracy and completeness. It is submitted subject to independent investigation by you, without reliance on us. This submission is subject to change in price, prior to sale or withdrawal without notice.



FOR INFORMATION

Katina Zepp

Direct 214-644-1226

Cell 214-676-3709

katina@katinazepp.com

Information furnished, while obtained by sources believed reliable, has not been verified by Craig International Inc.; we make no guarantee, warranty or representation as to its accuracy and completeness. It is submitted subject to independent investigation by you, without reliance on us. This submission is subject to change in price, prior to sale or withdrawal without notice.

6850 TPC Dr., Suite 210
McKinney, Texas 75070
Office 972-529-1371
E-Fax 214.242.2053