



6850 TPC Dr., Suite 210  
 McKinney, Texas 75070  
[www.craig ranchcommercial.com](http://www.craig ranchcommercial.com)

# FOR SALE Commercial Pads

North Side -Sam Rayburn Tollway / SH Hwy 121  
 Between Stacy & Alma Road

## Pad Sites

- (1) 3.60 acs @ \$10/psf
- (2) 1.061 acs @ \$21/psf
- (3) 3.710 acs @ \$18/psf or 3 pads 1.24 acs ea. @ \$21/psf
- (4) 1.799 acs @ \$10/psf
- (5) 2.504 acs @ \$10/psf
- (6) 2.895 acs @ \$12/psf

Utilities At/Near the sites

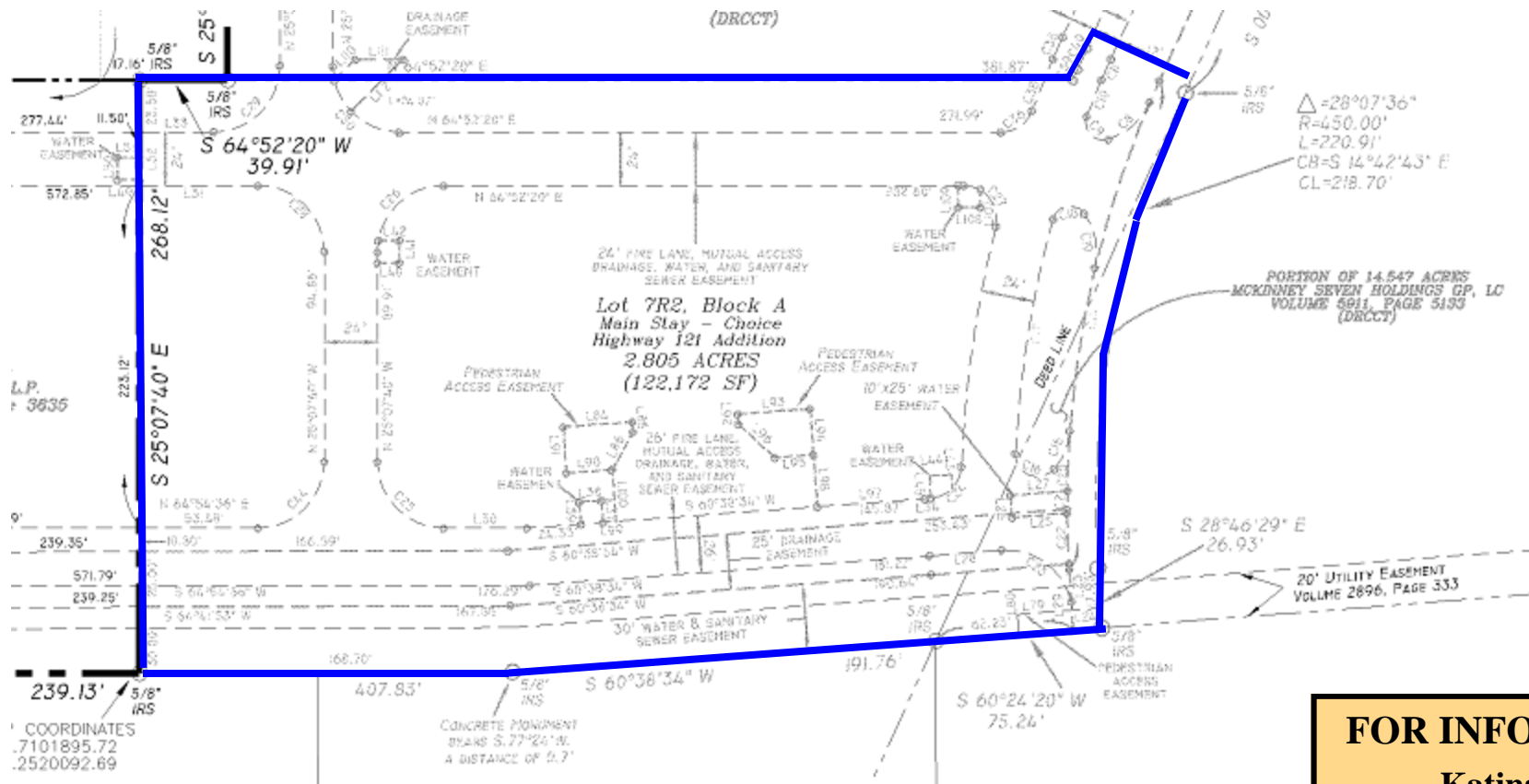


Craig Ranch at more than 2,200 acres, Craig Ranch is considered one of the countries most outstanding master-planned developments. Located at the northeast quadrant of the Sam Rayburn Tollway/SH 121 & Custer Road in McKinney, Texas. Craig Ranch is the newest example of "New Urbanism" principles which provides residents and visitors the ability to live, work and play all within a short walking distance in their community. Once built out, Craig Ranch will be home to more than 20,000 residents & 30,000 employees.



2.895 +/- Acre  
Commercial Retail/Hotel Pad Site fronting on  
Sam Rayburn Tollway/ SH 121

Lot 7R2, Block A  
Hwy 121 Addition



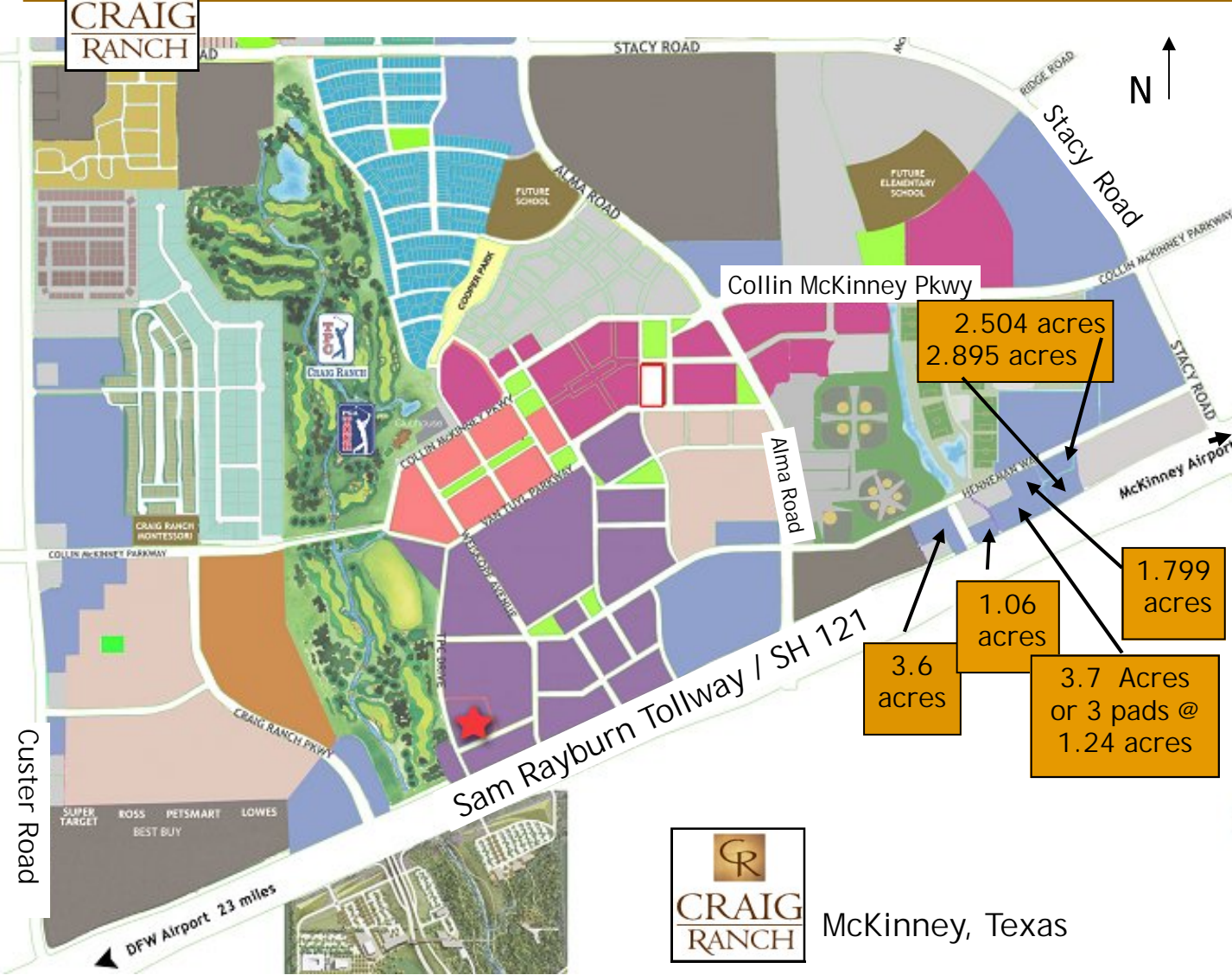
**FOR INFORMATION**

**Katina Zepp**

Cell 214-676-3709  
kzepp@craigintl.com  
katina@katinazepp.com

Information furnished, while obtained by sources believed reliable, has not been verified by Craig International Inc.; we make no guarantee, warranty or representation as to its accuracy and completeness. It is submitted subject to independent investigation by you, without reliance on us. This submission is subject to change in price, prior to sale or withdrawal without notice.





McKinney, Texas

### Amenities

- \* Located on Sam Rayburn Tollway
- \* South side of the Ballfields of Craig Ranch
- \* Southeast of TPC @ Craig Ranch
- \* Close Proximity to Michael Johnson Performance Center Cooper Fitness Center & Spa THR Outpatient Center Craig Ranch Volley Ball Beaches @ Craig Ranch
- \* Short distance to Allen Outlet Mall & the Fairview Mall
- \* Easy access to Central 75 to the east and North Dallas Tollway to the West.
- \* In a high growth market having nothing but upside.

### FOR INFORMATION

**Katina Zepp**

Cell 214- 676-3709  
kzepp@craigintl.com  
katina@katinazepp.com

Location: The pad sites are located on the north side of Sam Rayburn Tollway / SH Hwy 121 and more specifically at the southeast quadrant of Alma Road & Sam Rayburn Tollway. The northern boundary of the property is Henneman Way and the east roadway is Stacy Road.

Information furnished, while obtained by sources believed reliable, has not been verified by Craig Ranch, Craig International Inc. and The Zepp Company; we make no guarantee, warranty or representation as to its accuracy and completeness. It is submitted subject to independent investigation by you, without reliance on us. This submission is subject to change in price, prior to sale or withdrawal without notice.