



CRAIG
INTERNATIONAL

FOR SALE
Land Parcels — McKinney, Tx
South Of Eldorado Pkwy
Bush @ El Lago Dr. & west of Craig Dr. @ El Lago Dr.

Size:(s)
Tract 1 3.435 ac.
Tract 2 3.468 ac.

Zoning
PD—"O" Office District

Asking Price
\$4.50/psf

Building Height
Maximum 50 Ft

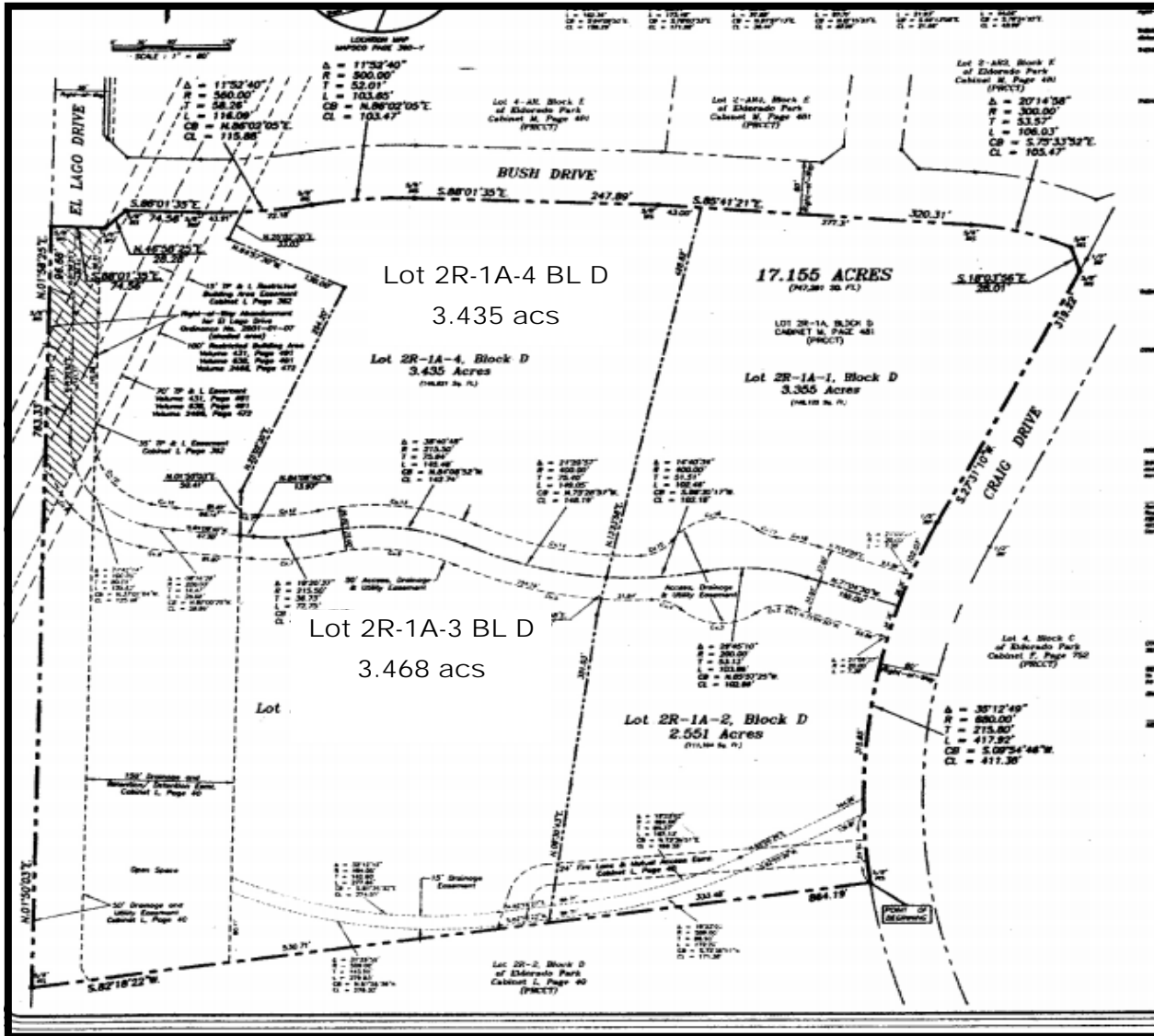
Uses

- Professional & Administrative
- Doctors, dentists, attorneys, architects, engineers, insurance, real estate, travel agents
- Business or commercial school, institutions of education, government, and religious buildings;
- Clinics, medical and dental;
- Banks and other financial institutions
- Research or scientific laboratories of primarily office nature.



The subject lots are located in McKinney in the Eldorado area. The tracts are just to the west side of S. Central Expwy and South of Eldorado Pkwy off Craig Drive. These two tracts are nestled in trees having a Holiday Inn Express to the eastern side of them.

Information furnished, while obtained by sources believed reliable, has not been verified by Craig International Inc.; we make no guarantee, warranty or representation as to its accuracy and completeness. It is submitted subject to independent investigation by you, without reliance on us. This submission is subject to change in price, prior to sale or withdrawal without notice.



DEMOGRAPHICS

2008	1mi	3mi	5mi
Population	9,666	86,683	131,733
Ave Income	\$100,889	\$102,364	\$102,836
Owner Occ.	63%	77%	80%

For Information

Katina Zepp

Direct 214-644-1226

Cell 214-676-3709

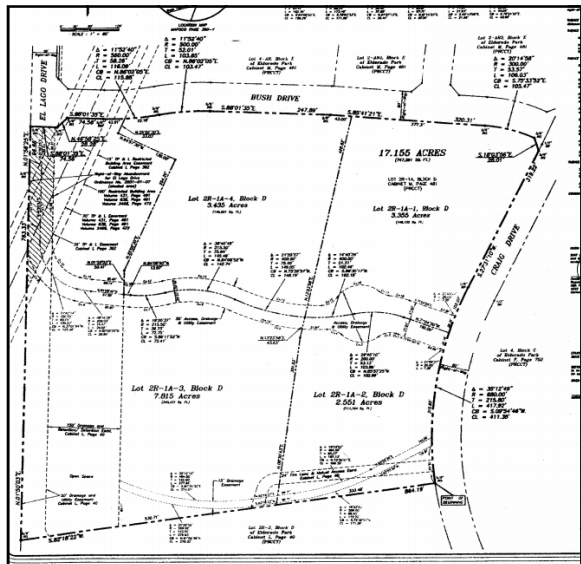
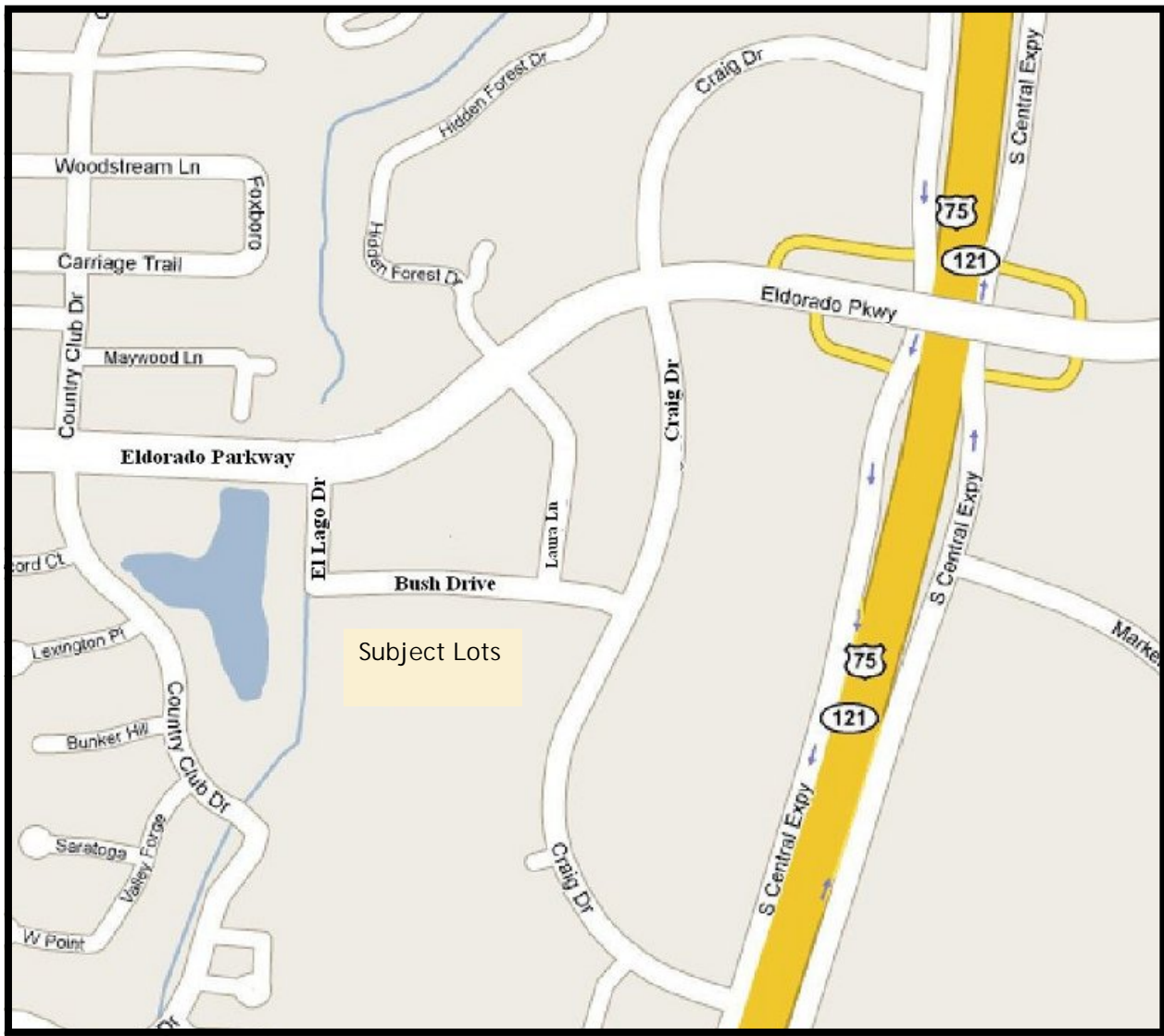
kzepp@craigintl.com

The tracts of land are located west of Eldorado Pkwy south on Craig Drive. Take Craig Drive to El Lago Drive and turn right or west. You will see two awesome tracts with trees and more trees. One tract is on each side of El Lago Drive

Information furnished, while obtained by sources believed reliable, has not been verified by Craig International Inc.; we make no guarantee, warranty or representation as to its accuracy and completeness. It is submitted subject to independent investigation by you, without reliance on us. This submission is subject to change in price, prior to sale or with-



CRAIG
INTERNATIONAL



For Information
Katina Zepp
Direct 214-644-1226
Cell 214-676-3709
kzepp@craigintl.com

Information furnished, while obtained by sources believed reliable, has not been verified by Craig International Inc.; we make no guarantee, warranty or representation as to its accuracy and completeness. It is submitted subject to independent investigation by you, without reliance on us. This submission is subject to change in price, prior to sale or withdrawal without notice.



6850 TPC Dr., Suite 210
McKinney, Texas 75070
Office 972-529-1371
Fax 972-529-1375